

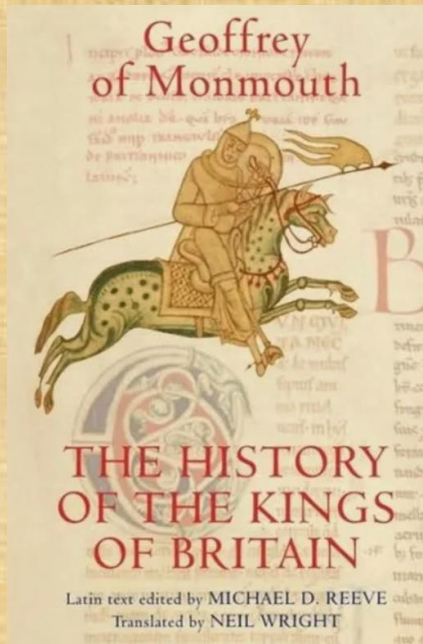
# The Early Middle Ages

410-1066

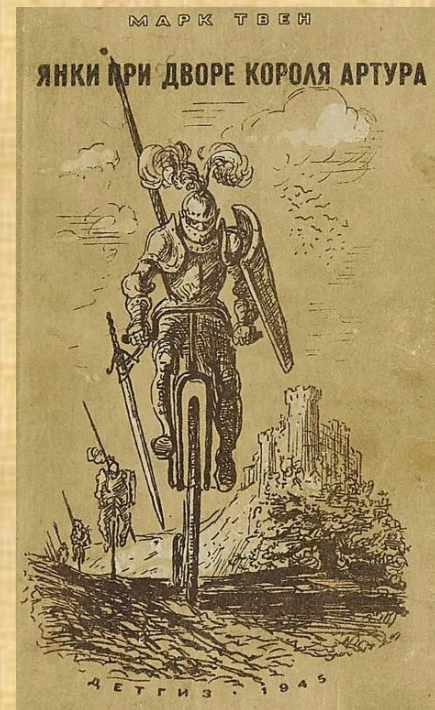
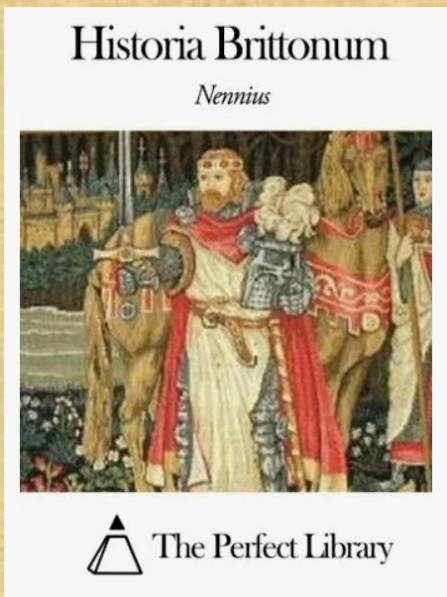
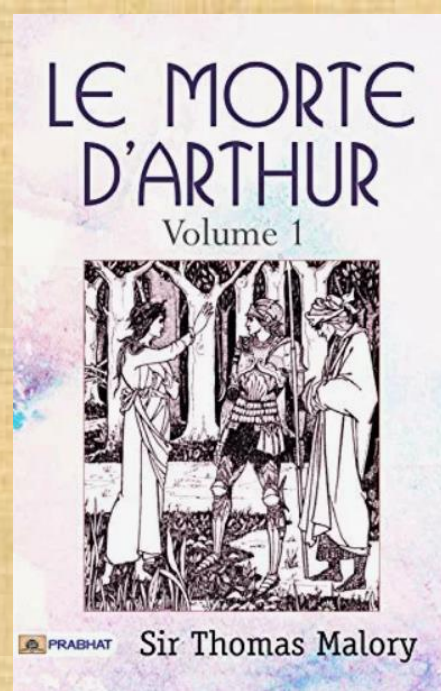


Изотов Андрей Иванович,  
доктор филологических наук,  
профессор МГУ им. М.В. Ломоносова





Chrétien de Troyes  
**Perceval**  
 ou le Roman du Graal





This map shows the different regions and the most important kingdoms in Britain around the year 600.

- Pictish kingdoms
- Celtic kingdoms
- Anglo-Saxon kingdoms



This picture from a late Anglo-Saxon book shows two farmers at work, harvesting their crops with huge tools known as scythes.

O  
Afr







Рис 7





# Alfred the Great

Alfred is remembered as the greatest Anglo-Saxon king. This statue of him was put up in Winchester, his capital, one thousand years after his death.

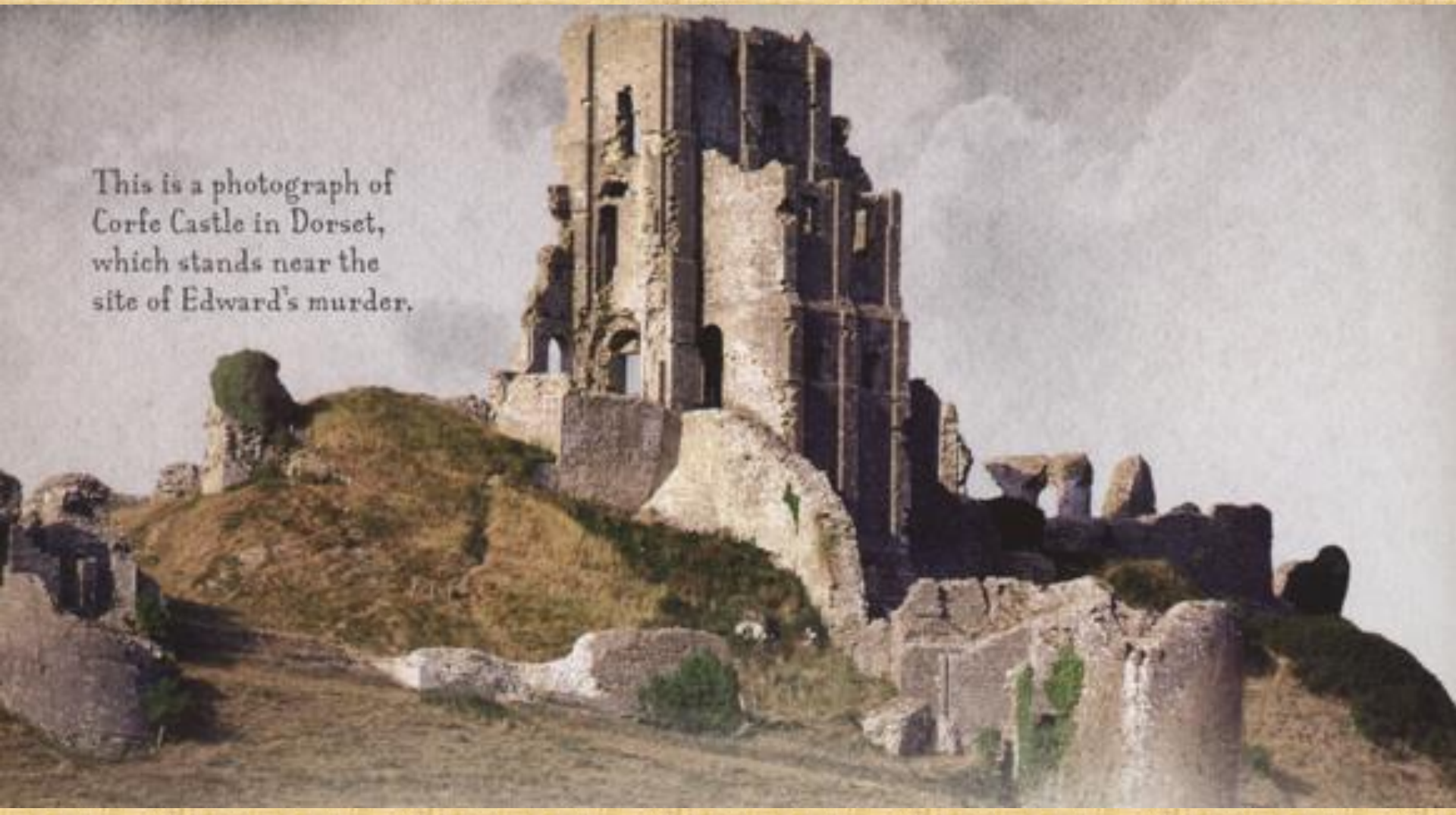


# Picts and Scots



# The new raiders

This is a photograph of  
Corfe Castle in Dorset,  
which stands near the  
site of Edward's murder.



## Saintly Edward

Edward was deeply religious, and was made into a saint after he died. He became known as Edward 'the Confessor' - a name given to someone who lived a holy life.



# Trouble ahead



***Thank you for your attention!***