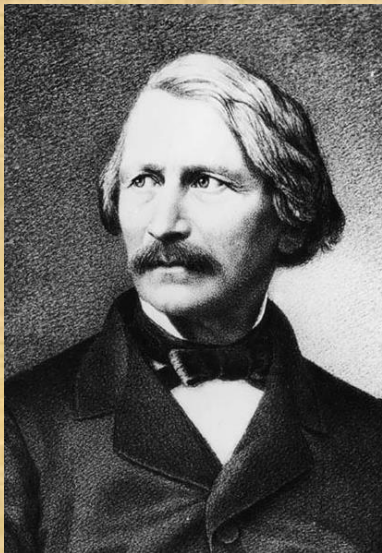


Десять веков пражской архитектуры. Архитектура неоренессанса и необарокко



Gottfried Semper
1803 – 1879

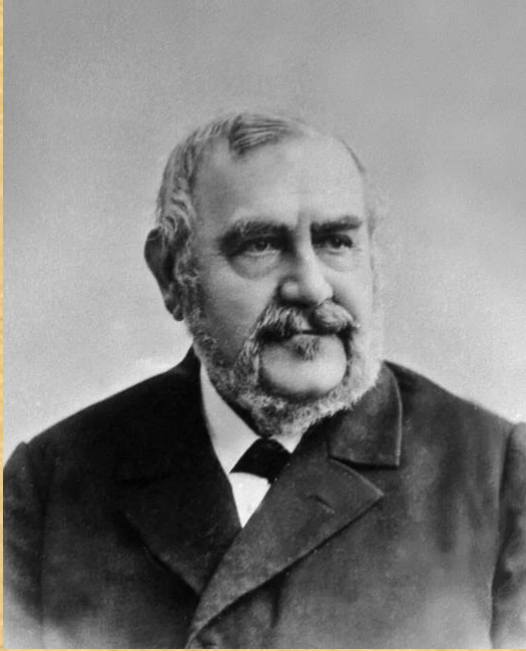


Semperoper in Dresden

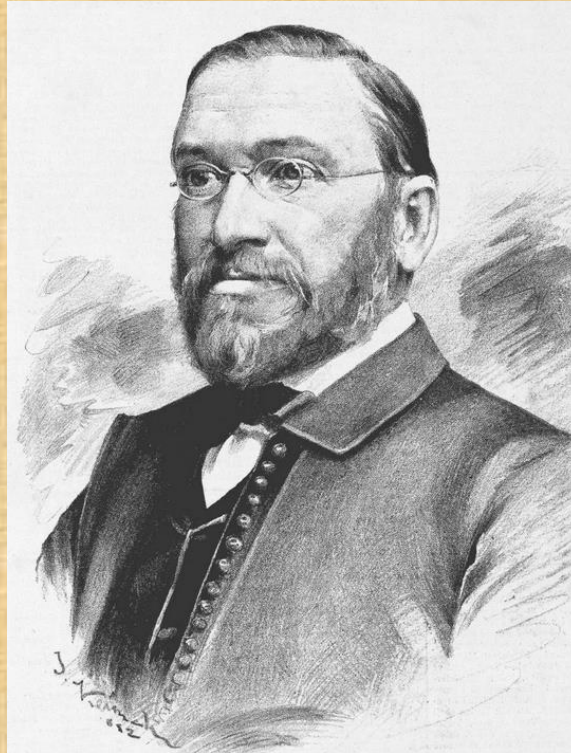


Изотов Андрей Иванович,
доктор филологических наук,
профессор МГУ им. М.В. Ломоносова

National Theatre



František Ladislav Rieger



Alois Pravoslav Trojan



František Palacký

National Theatre



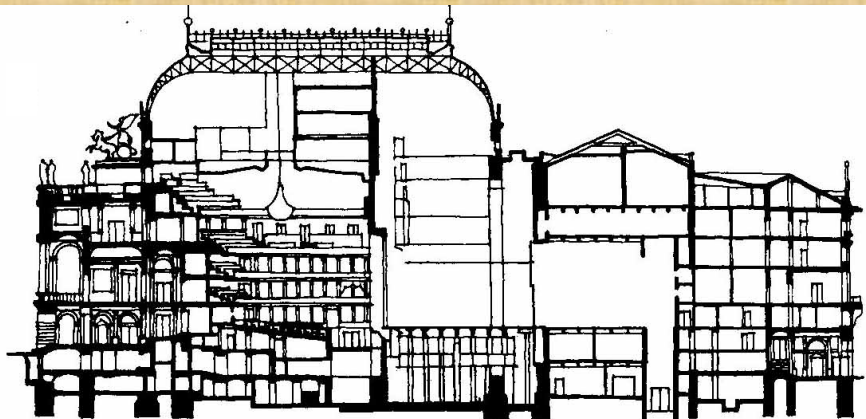


National
Theatre

National Theatre



National Theatre



ZÍTEK'S BUILDING

PROVISIONAL SCHULZ HOUSE THEATRE





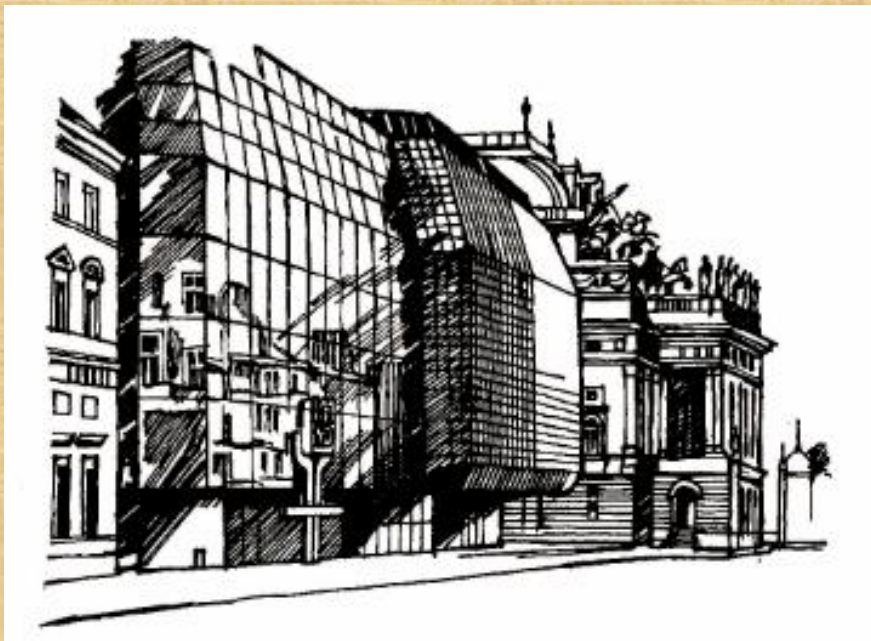
Cest
F



LETENKY ONLINE
www.kroloms.cz

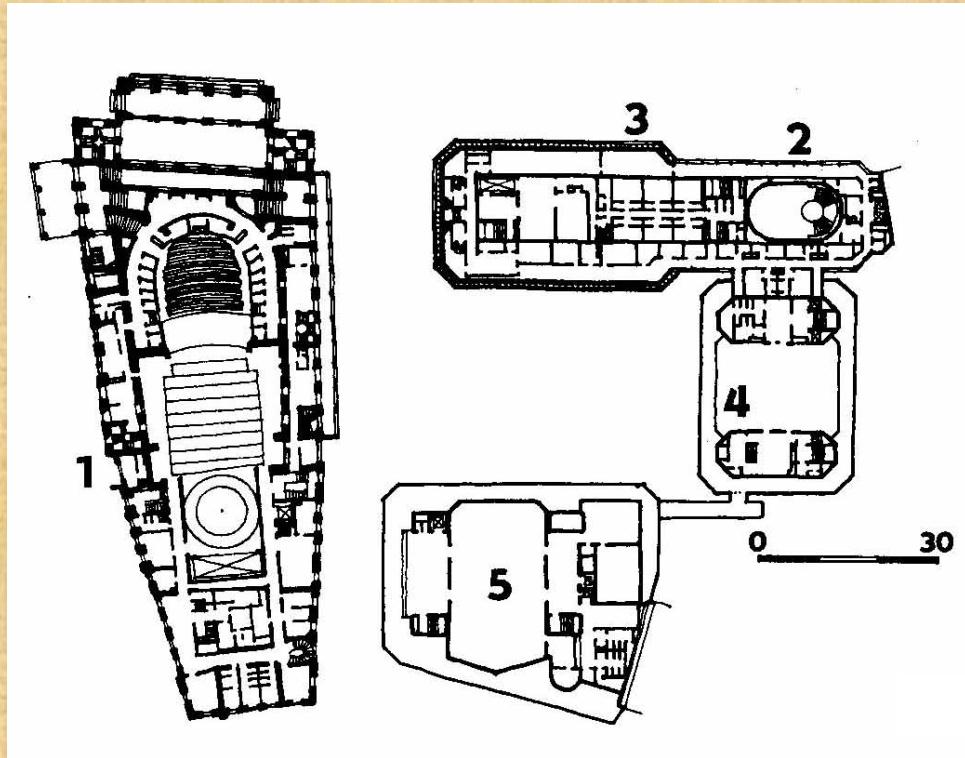
LETENKY ONLINE
www.kroloms.cz

KROLOMS
LONDYN
745 Kč
NEBESNÉ
LETENKY
ONLINE
www.kroloms.cz



National Theatre – New Stage

- 1 National Theatre
- 2 Entrance Hall
- 3 New Stage
- 4 Café and restaurant
- 5 National Theatre Administration





LAINA MASKA



Academy of Sciences





Ignác Vojtěch Ullmann.

Ignác Ullmann

Café Slavia



Stromovka Park



Chotek
Gardens



Petřín funicular



Petřín look-out Tower



Letná Park



Monument to J. V. Stalin by Otakar Švec





1962



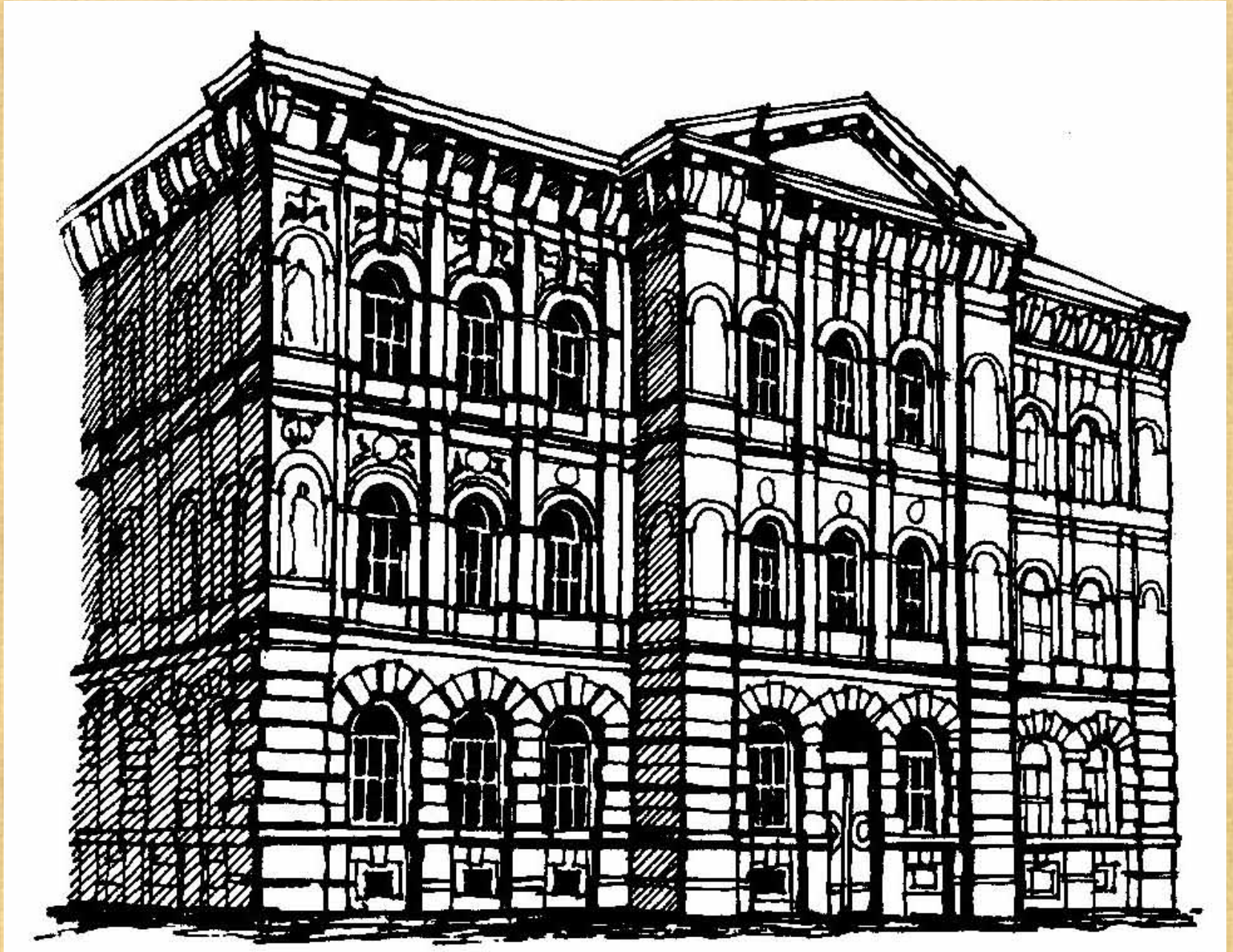
Vrchlický Park



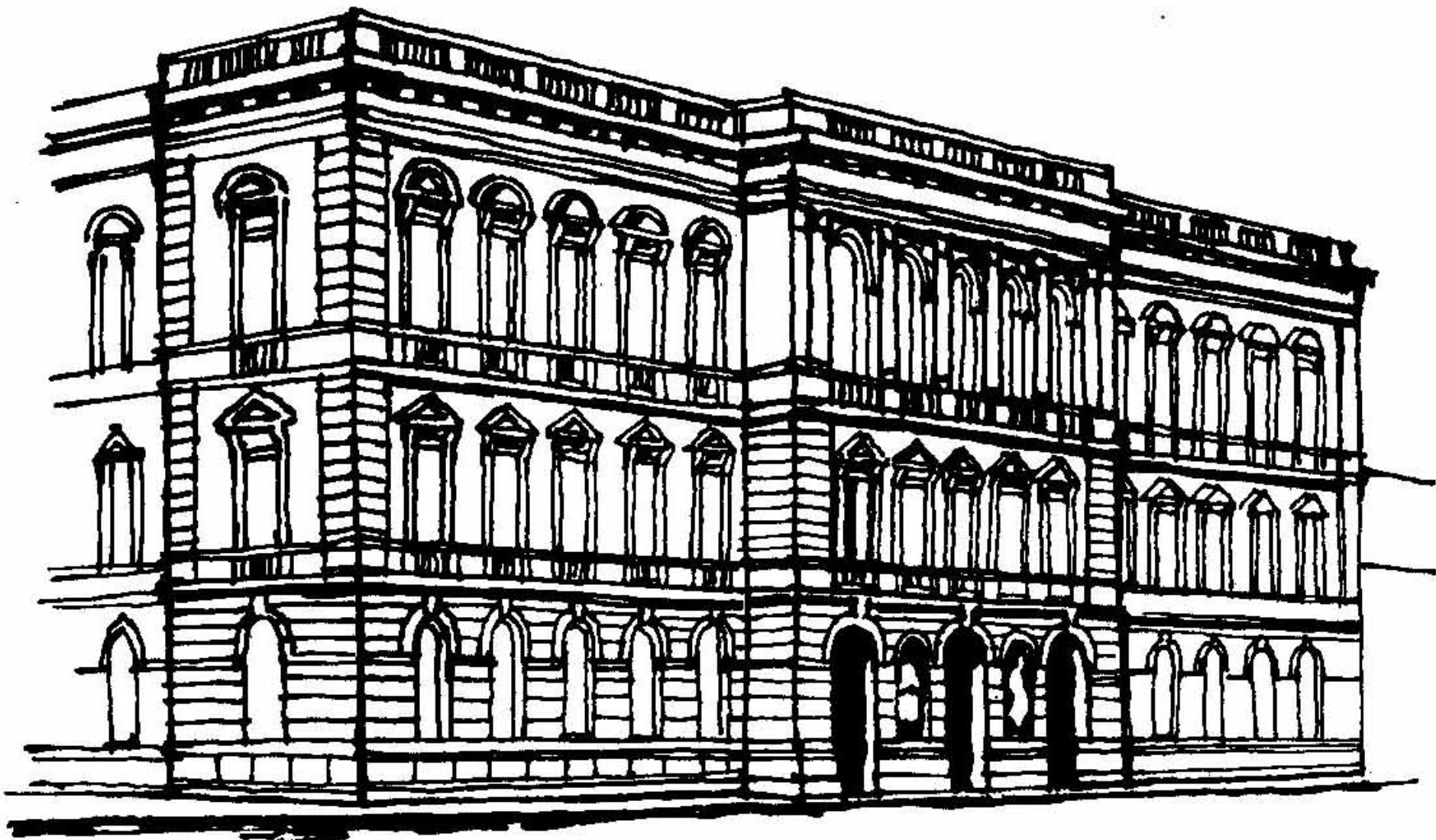
Čelakovský Park



Girls' College, Vodičkova Street



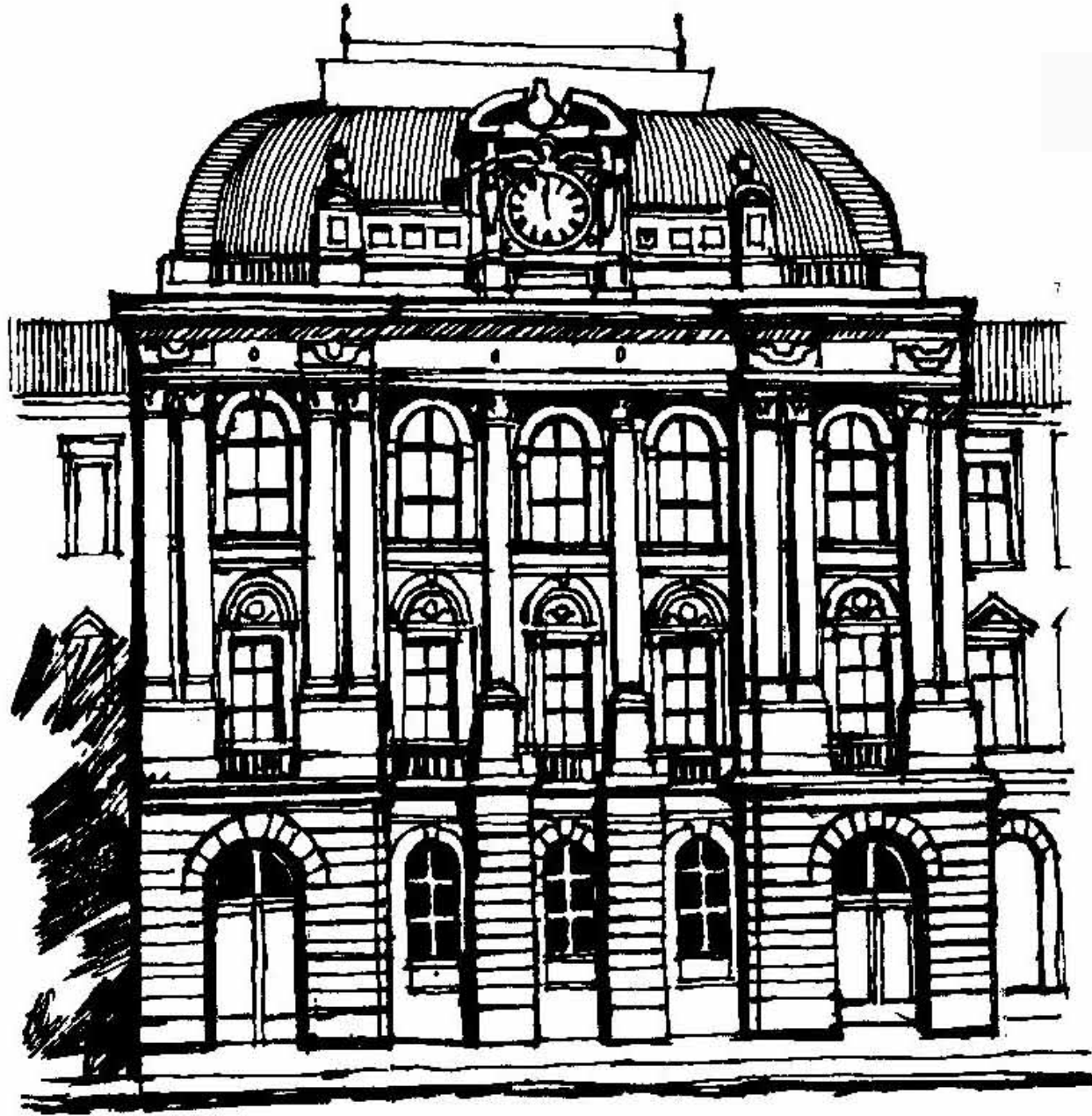
Czech Technical University, Charles Square



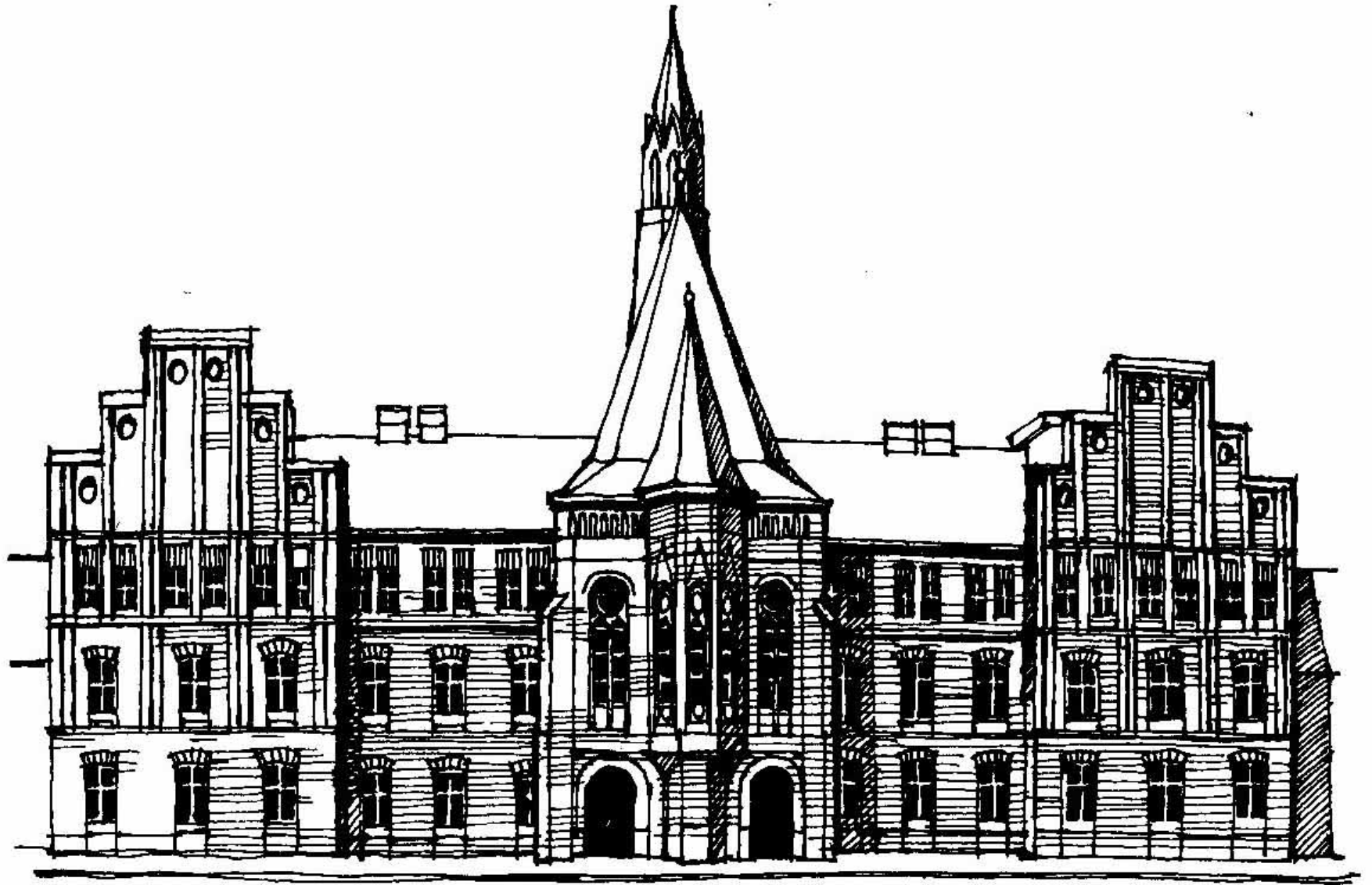
Municipal
Secondary School
Hellichova Street



Technical College, Na Smetance Street



Provincial Maternity Hospital



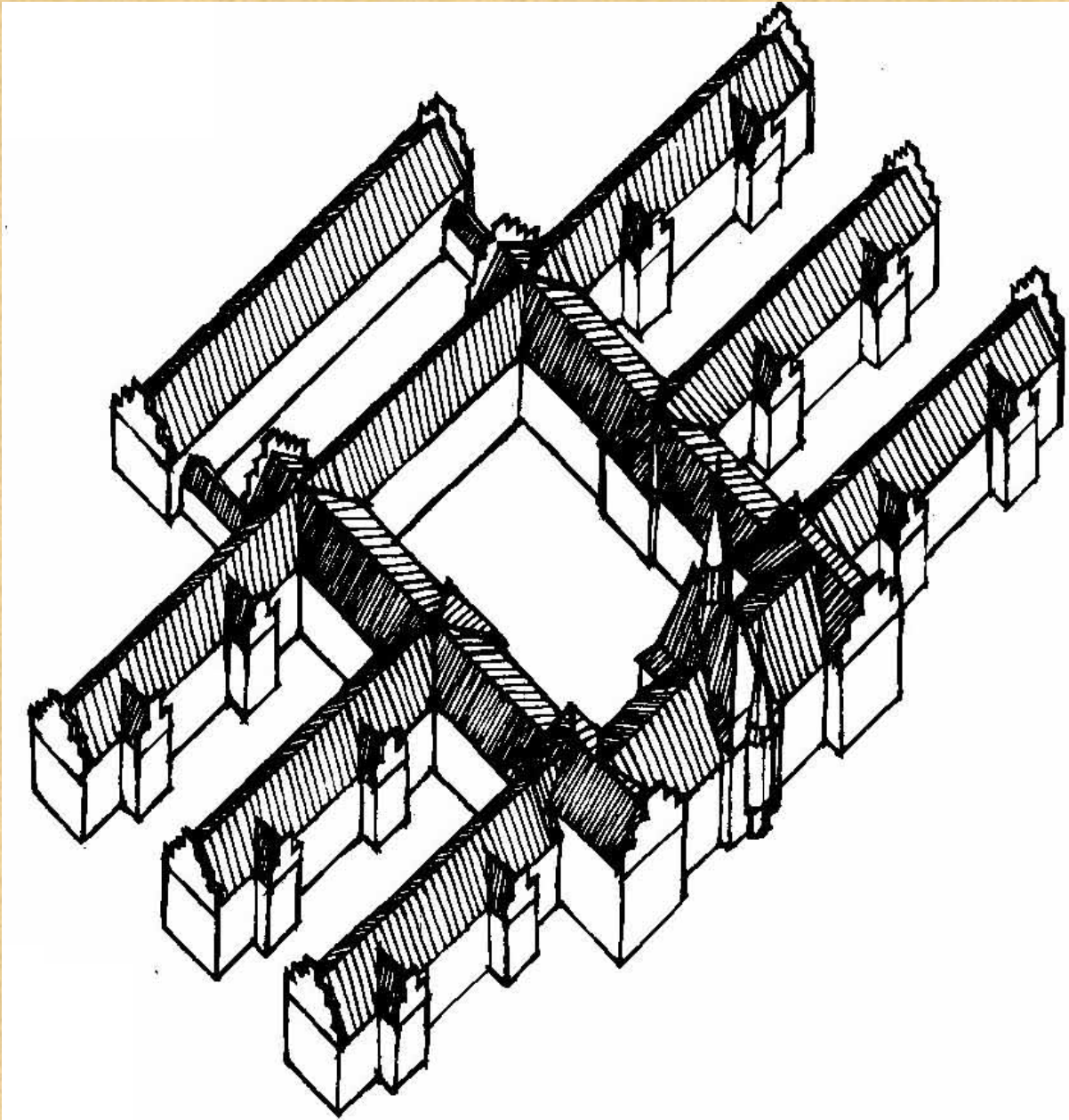


ZEMSKÁ PORODNICE · 1875
JEDNA Z NEJDÉLE OTEVŘENÝCH PORODNIC NA SVĚTĚ
PROJEKTOVAL A POSTAVIL
JOSEF HLÁVKA · 1831-1908
MECENÁŠ ČESKÉ VĚDY, KULTURY A VZDĚLÁNÍ

NATIONAL MATERNITY HOSPITAL · 1875
ONE OF THE LONGEST OPERATING
MATERNITY HOSPITALS IN THE WORLD
DESIGNED AND BUILT BY
JOSEF HLÁVKA · 1831-1908
PATRON OF CZECH SCIENCE, CULTURE AND EDUCATION

PROJEKTOVAL A POSTAVIL
JOSEF HLÁVKA · 1831-1908
MECENÁŠ ČESKÉ VĚDY, KULTURY A VZDĚLÁNÍ

Provincial Maternity Hospital









Rudolph Footbridge (demolished in 1914)



School of Decorative Arts



Josef Mánes Bridge





Josef Mánes Bridge





STAVBAŘI
PROJEKTOVATEL
STAVBAŘI

PROVÁDĚNÍ STAVBY
BAGLER
TOPENÍ VODA PLYN HŘIZLACE
KONTAKT: 18. DUBŇSKÁ 18 063 411 000

063 411 000

063 411 000

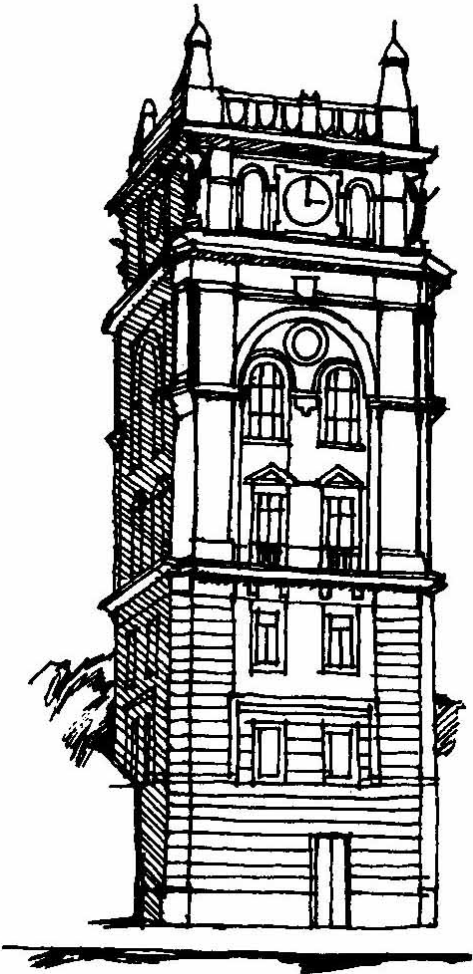


MEZINÁRODNÍ
HUSARSKÝ FESTIVAL
RÁDEK JORDAN
RÁDEK HEDVÍBKOV
MEZINÁRODNÍ
HUSARSKÝ FESTIVAL

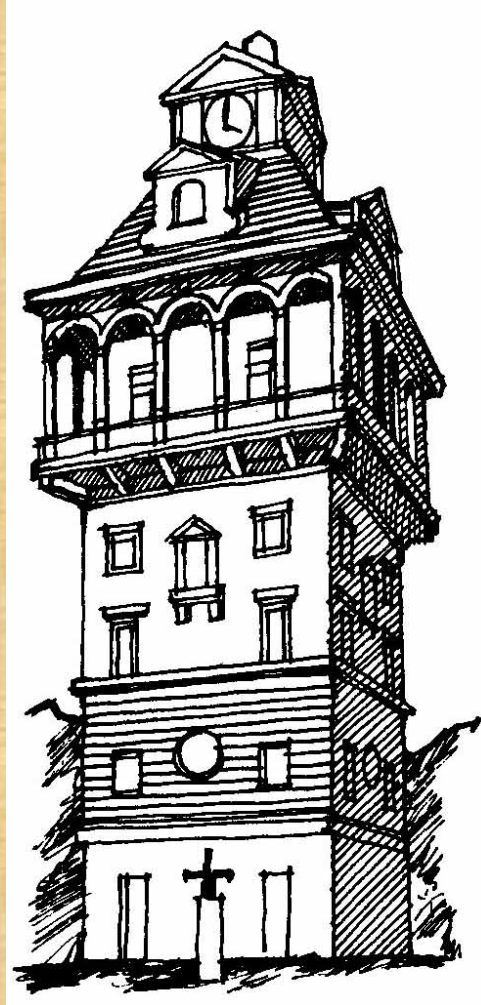
PARKING



Water Towers



Vinohrady



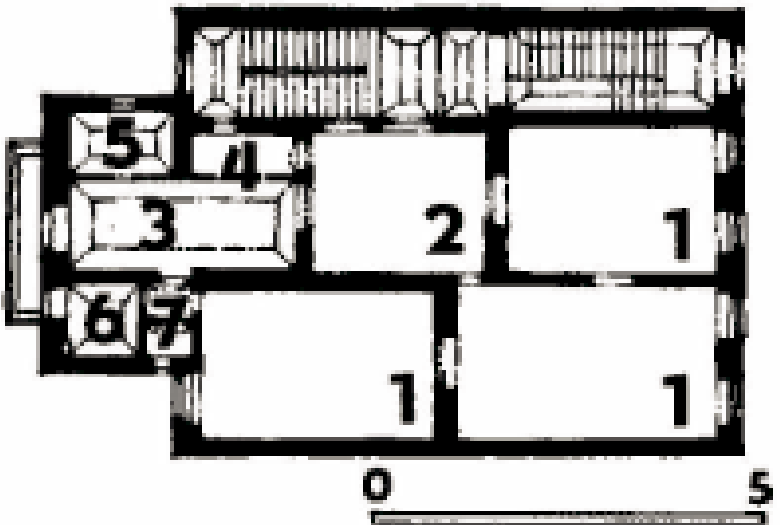
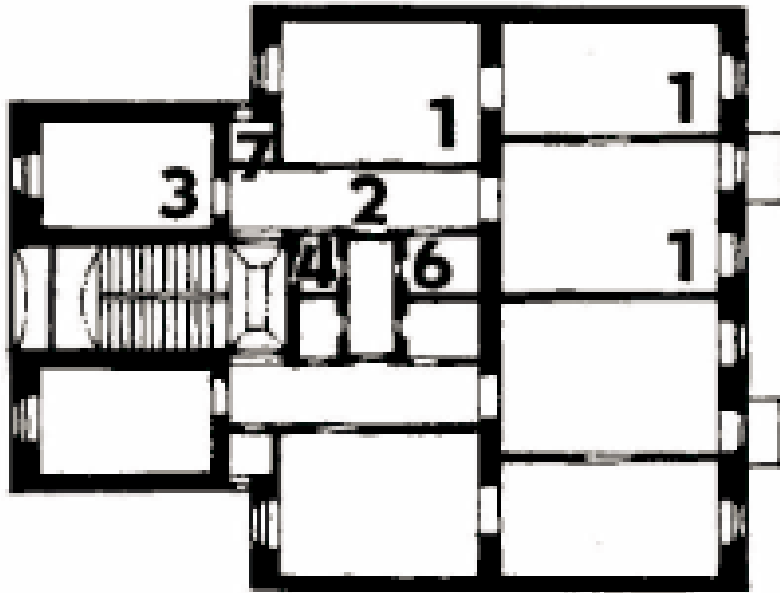
Letná



Libeň

Houses Nos. 558, 563, Janáček Embankment





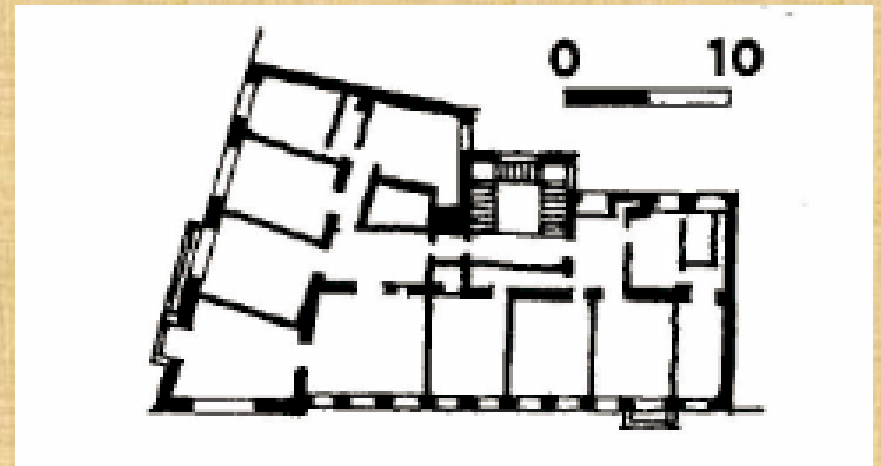
- 1 room,
- 2 hallway,
- 3 kitchen,
- 4 pantry,
- 5 maid's room,
- 6 bathroom,
- 7 WC

Schwarzenberg Palace on Hradčany Square





Wiehl House



Lanna Villa



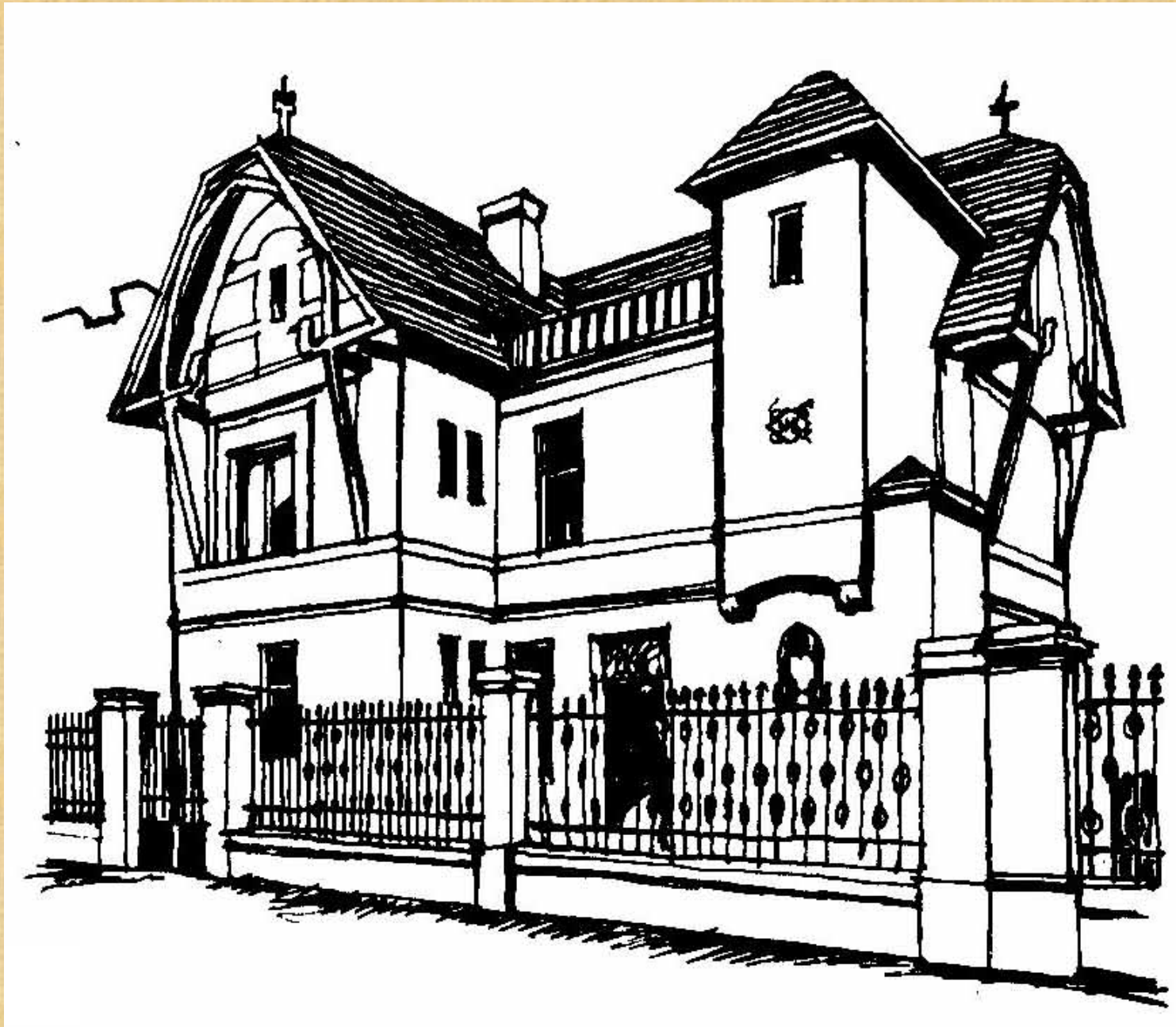
Gröbe Villa



Gröbe Villa (restored)



Architect Koula's own house



National Museum



National Museum



Museum of the City of Prague



Museum of Decorative Arts



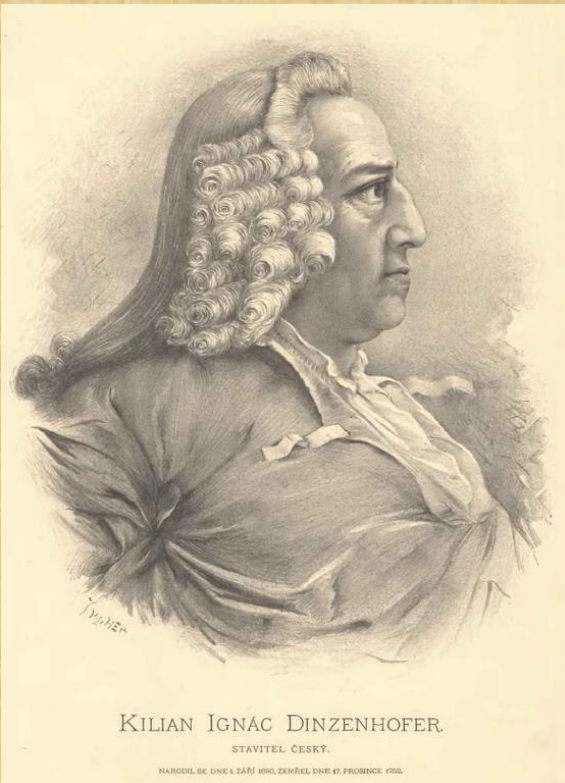


St. Wenceslas' Church
in Smíchov District

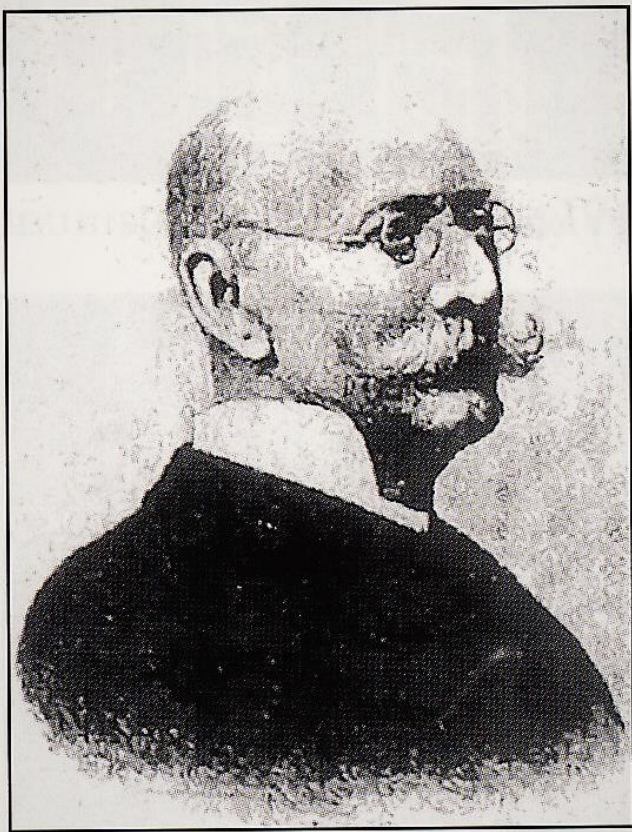
Arbes Square



Baroque Portheimka Villa



St. Wenceslas' Church in Smíchov District



Viktor Barvitsky



St. Wenceslas' Church in Smíchov District



Monastery and Church of St. Gabriel







PAVILION

albert
1447 den
7-21

P
P
P

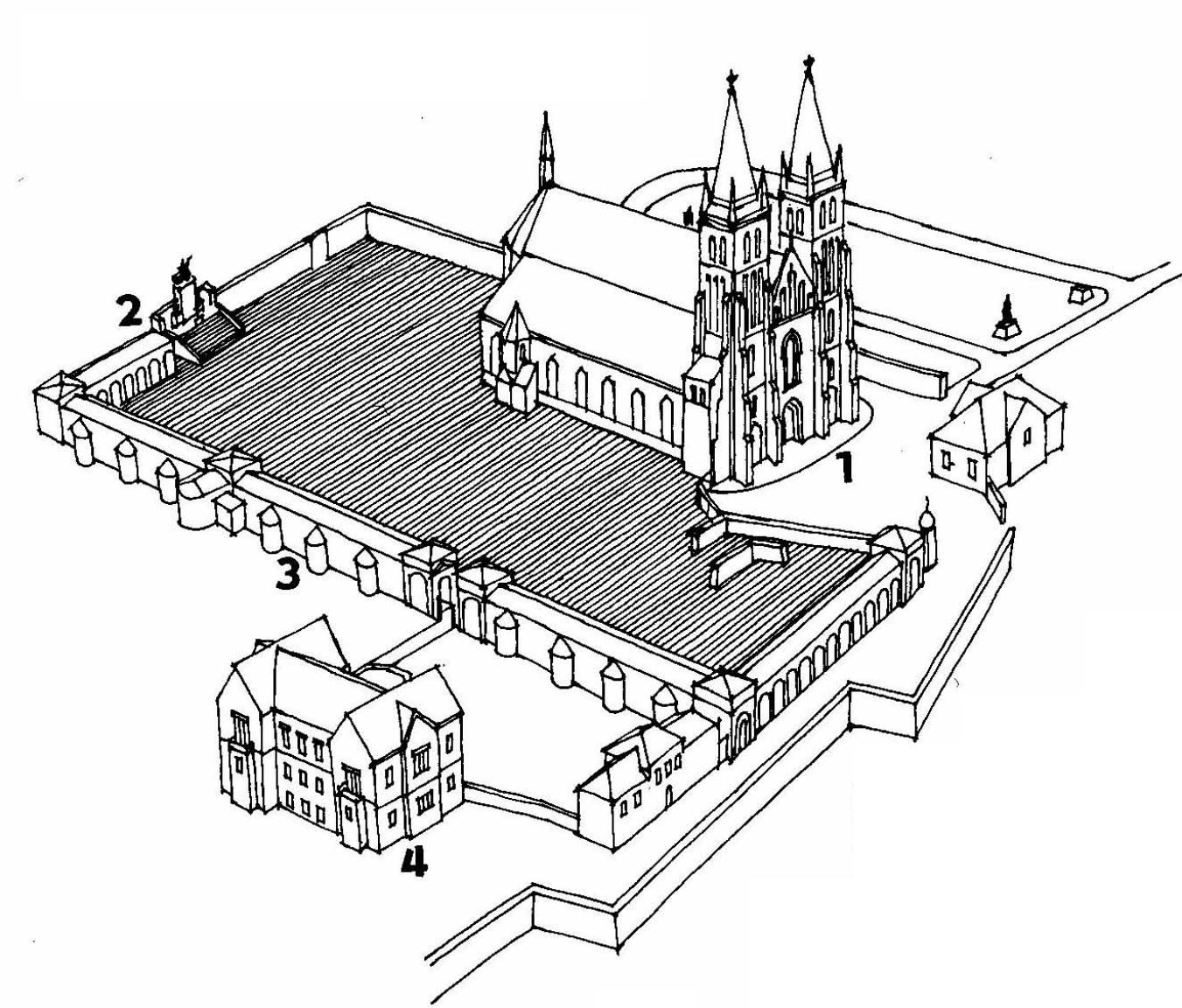
P

13

Smíchov
market-hall



National Cemetery,
Vyšehrad



1 Church of Saints Peter and Paul,
2 cemetery and Slavín,
3 arcades,
4 New Provost's Lodgings

Slavín





AC GENEAL MESTE KROUVI

JOSEF KRÁL
1870 - 1910
RUDOLPH ŠTAMBERK
1870 - 1910
JAN VÍŠŇŮK
1870 - 1910
JAN KALCANDA
1870 - 1910
JOSEF V. MYSLÍBEK
1870 - 1910

JULIUS ZEYER
1870 - 1910
VÁCLAV TOMEK
1870 - 1910
JOSEF LAD. PIČ
1870 - 1910
JOSEF V. SLÁDEK
1870 - 1910
JAROSLAV VÍCHLIČA
1870 - 1910

JAN ŠTURSÁ
1870 - 1910
JOSEF GRUBER
1870 - 1910
VOTĚCH HYNÁL
1870 - 1910
EMANUEL ŠTĚPÁNEK
1870 - 1910
KAMIL HEDVÍB
1870 - 1910

FRANŠEK KRČEK
1870 - 1910
OUDRICH HUJER
1870 - 1910

JOSEF GRUBER
1870 - 1910
KAMIL HEDVÍB
1870 - 1910





ANNA MILDOVA
ROZ. BARTYKOVA
*1.10.1878. +10.12.1900
JUD. JOS. MILDE
ADVOKAT. 1878
*26.11.1859. +12.12.1900
ANNA NATALIE
BARTOSOVICOVA
ROZ. HENNEROVA
*14.5.1878. +10.12.1900

VILEMINA
GVAKOVA
*1875. +1925
GICA
GVAKOVA
*1875. +1935
VENCIAK
*1875. +1941
RND-VIEM FLAK
*1875. +1941
RBEVA FLAKOVA
*1875. +1941

1878
1900
1900
1900
1900

THE VIKTORIA SQUARE



Antonín Dvořák





КАРЕЛ
СЛУВАНСКИЙ
18.05.1877 - 1.12.1943
+ ЖЕНА
+ ДЕТЯ
+ ДЕТЯ
+ ДЕТЯ

КАРЕЛ
СЛУВАНСКИЙ
18.05.1877 - 1.12.1943
+ ЖЕНА
+ ДЕТЯ
+ ДЕТЯ
+ ДЕТЯ

КАРЕЛ
СЛУВАНСКИЙ
18.05.1877 - 1.12.1943
+ ЖЕНА
+ ДЕТЯ
+ ДЕТЯ
+ ДЕТЯ

KLARA DOUDEROVA
* 28.10.1877 * 22.1.1943
KAHEL STOJAN
* 2.11.1912 * 27.11.1977

КАРЕЛ
СЛУВАНСКИЙ
18.05.1877 - 1.12.1943
+ ЖЕНА
+ ДЕТЯ
+ ДЕТЯ
+ ДЕТЯ

RODINA
МОНТАЖ







SVATOPLUK
ČECH 1846 1908

Karel Hynek
Mácha,
narozen 16. listopadu 1810.
zemřel 5. listopadu 1836.



Daleká cesta má!
Marne volání!

A. D. 1627
LIŠK
ROD. Z. VIS.

TOMÁŠ BART
ANTONÍN JAN
FRANTIŠEK II
VÁCLAV II. VI.

RODINA KOU
JAROSLAV KU
1810-1880

RODINA SLA

85

KAREL

ČAPEK

* 9. 1. 1890

+ 25. 12. 1938

OLGA SCHEINPFLUGOVÁ

* 1932

New Provost's Lodgings



Exhibition Grounds 1891

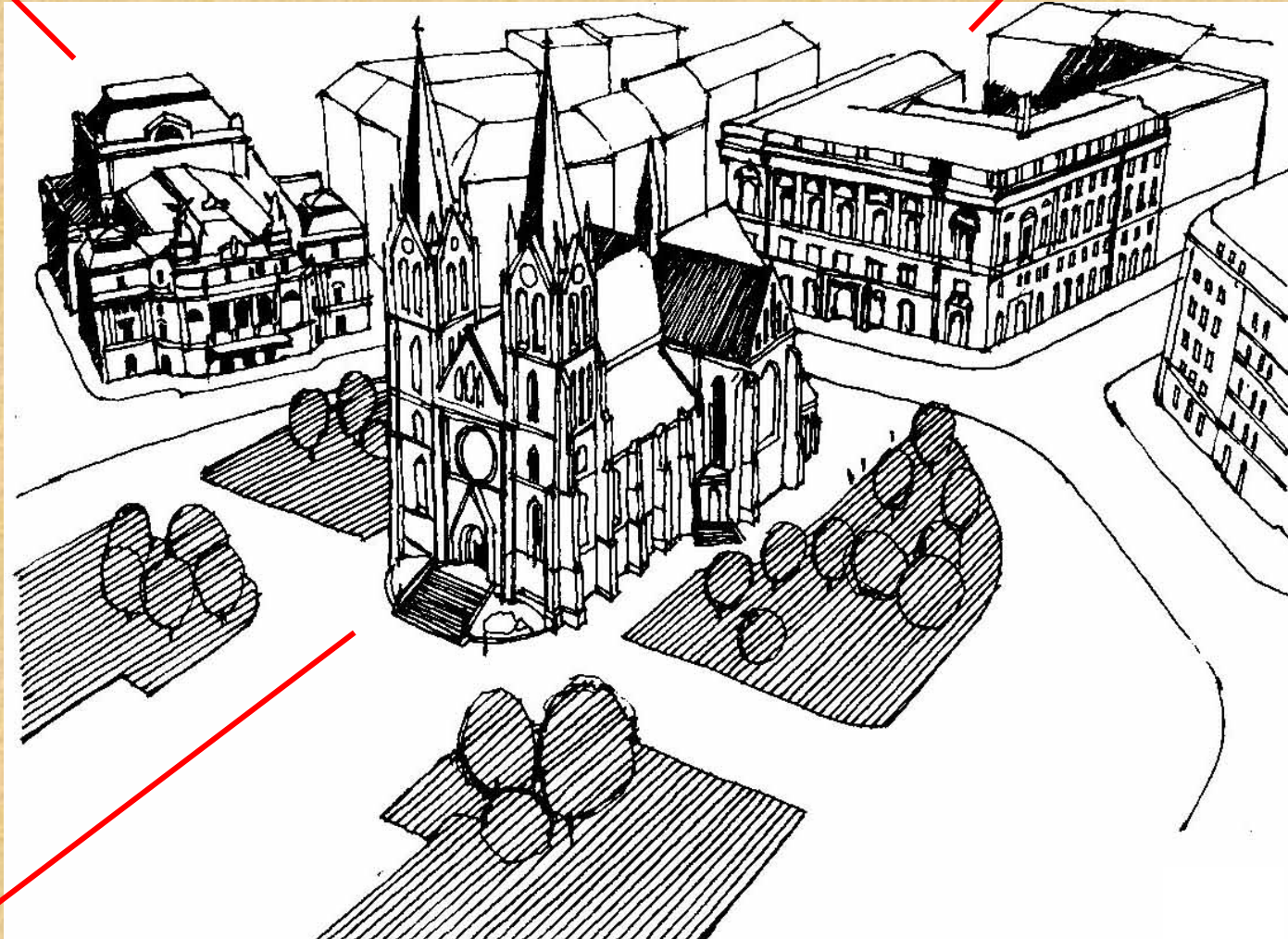




Peace Square (Náměstí Míru)

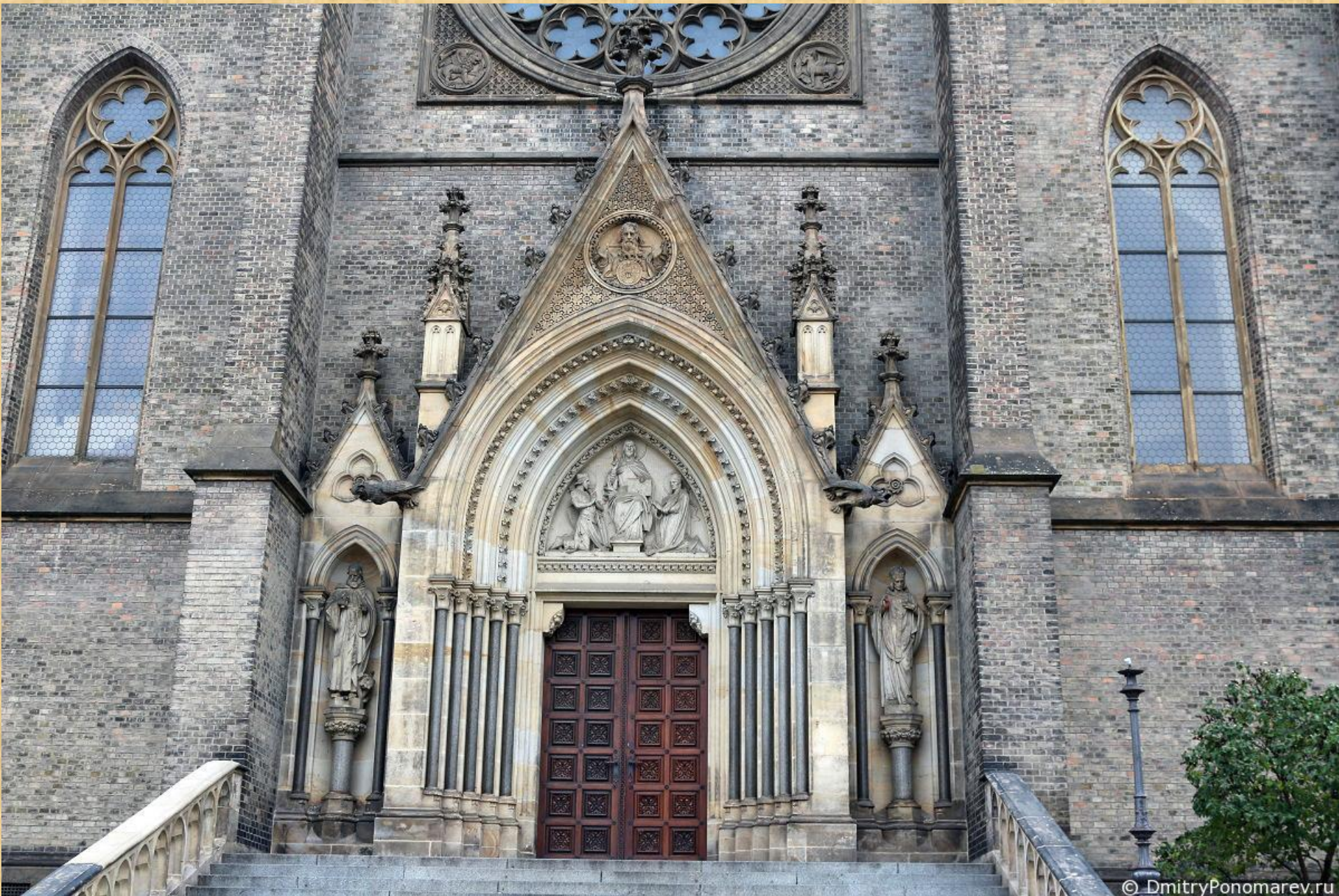
Vinohrady Theatre

Central House of Culture of Railwaymen



St. Ludmila's Church

Neo-Gothic Church of St. Ludmila



Votivkirche in Vienna



St. Clothilde's Church
in Paris



Neo-Gothic Church of St. Ludmila



House of Culture of the Transport and Communication Workers



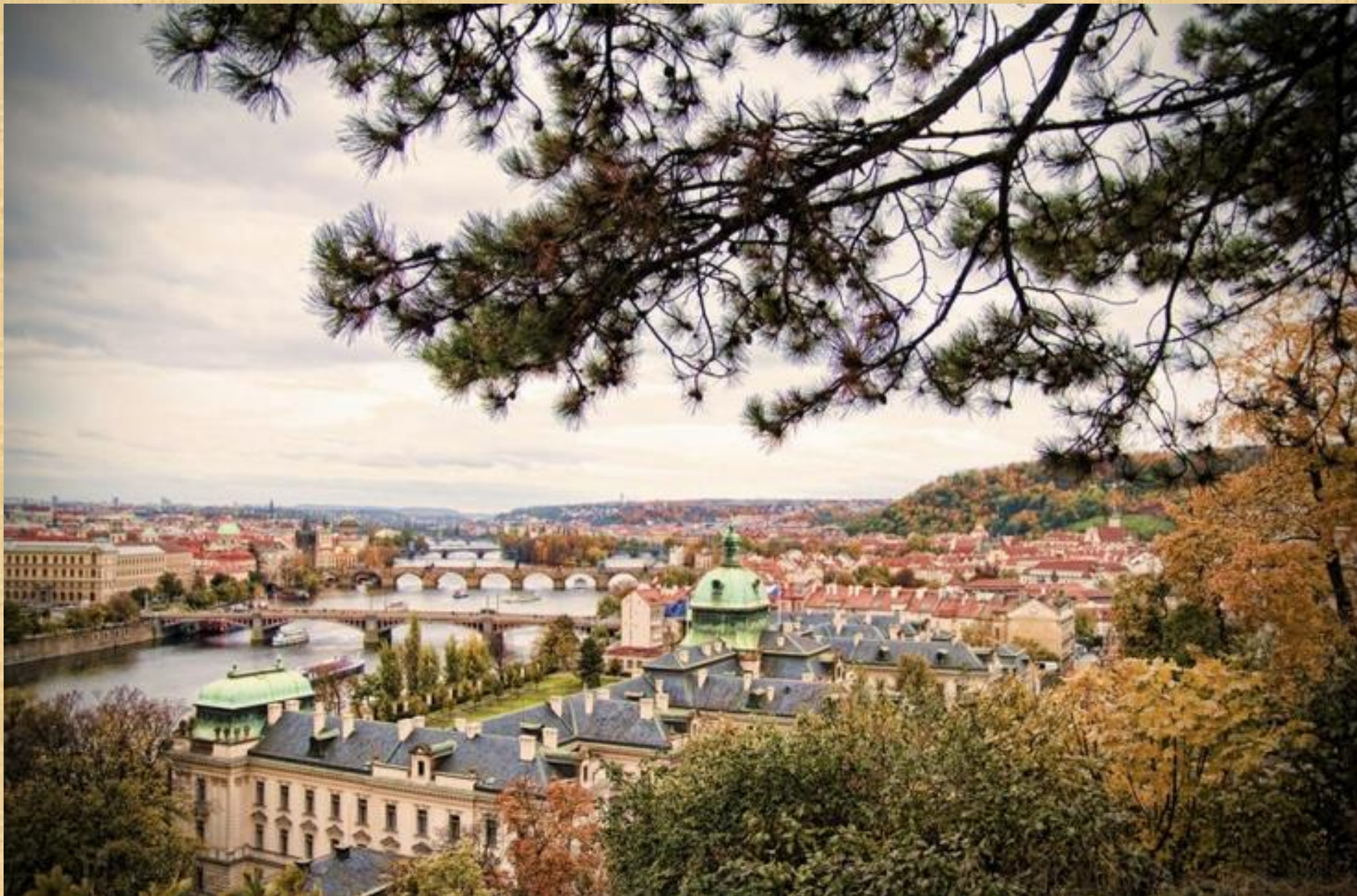
Theatre Na Vinohradech



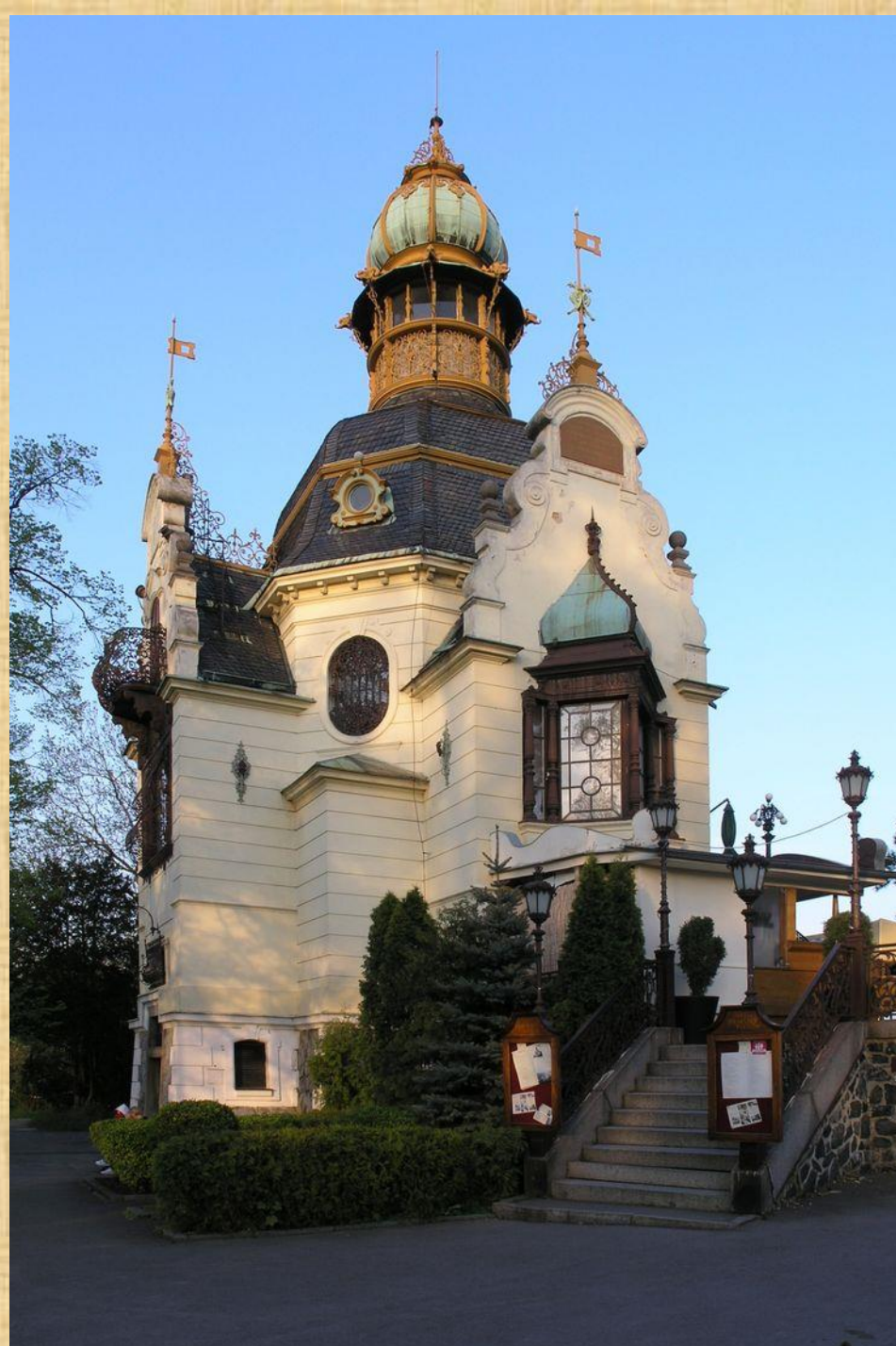
Neo-Gothic Church of St. Ludmila



View from Letná Plain



Neo-Baroque
↓
Neo-Renaissance
Hanau Pavilion



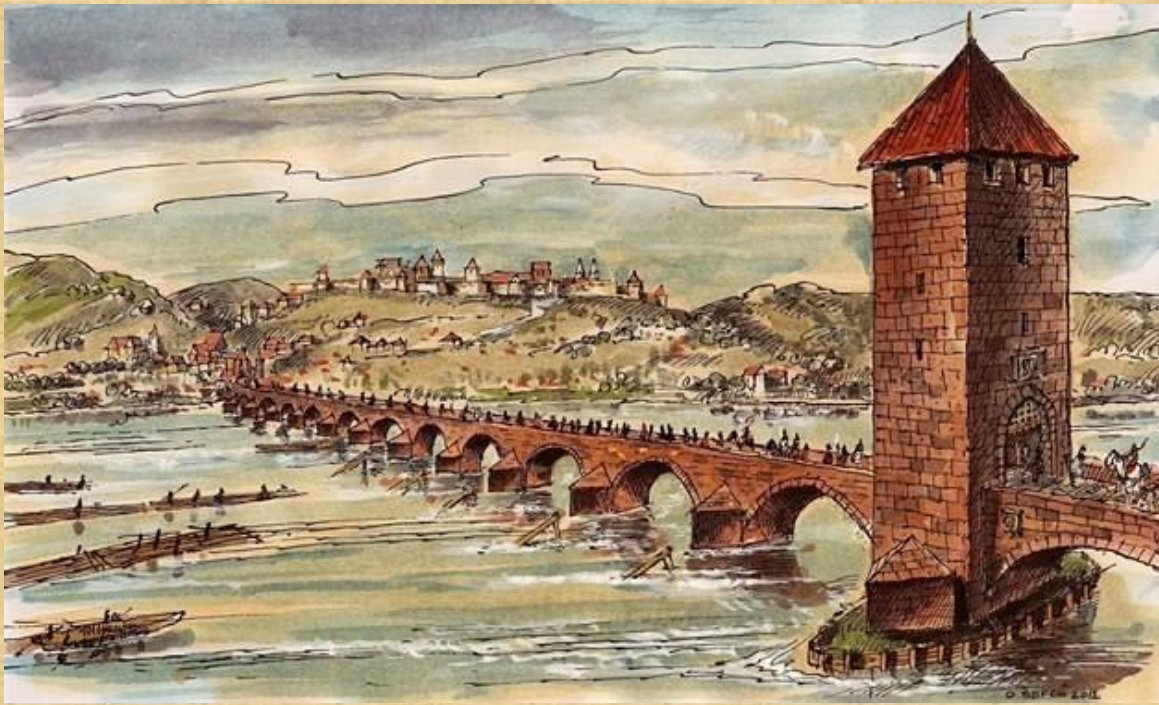
Villa of Karel Kramář



Provincial Bank







Judith Bridge

Charles Bridge



Bridge of Francis I



Francis Joseph I Bridge



Karlín viaduct



Palacký Bridge



Legion Bridge



Thank you for your attention!